

NUT SPLITTERS

Ashish Malhotra

July 2017

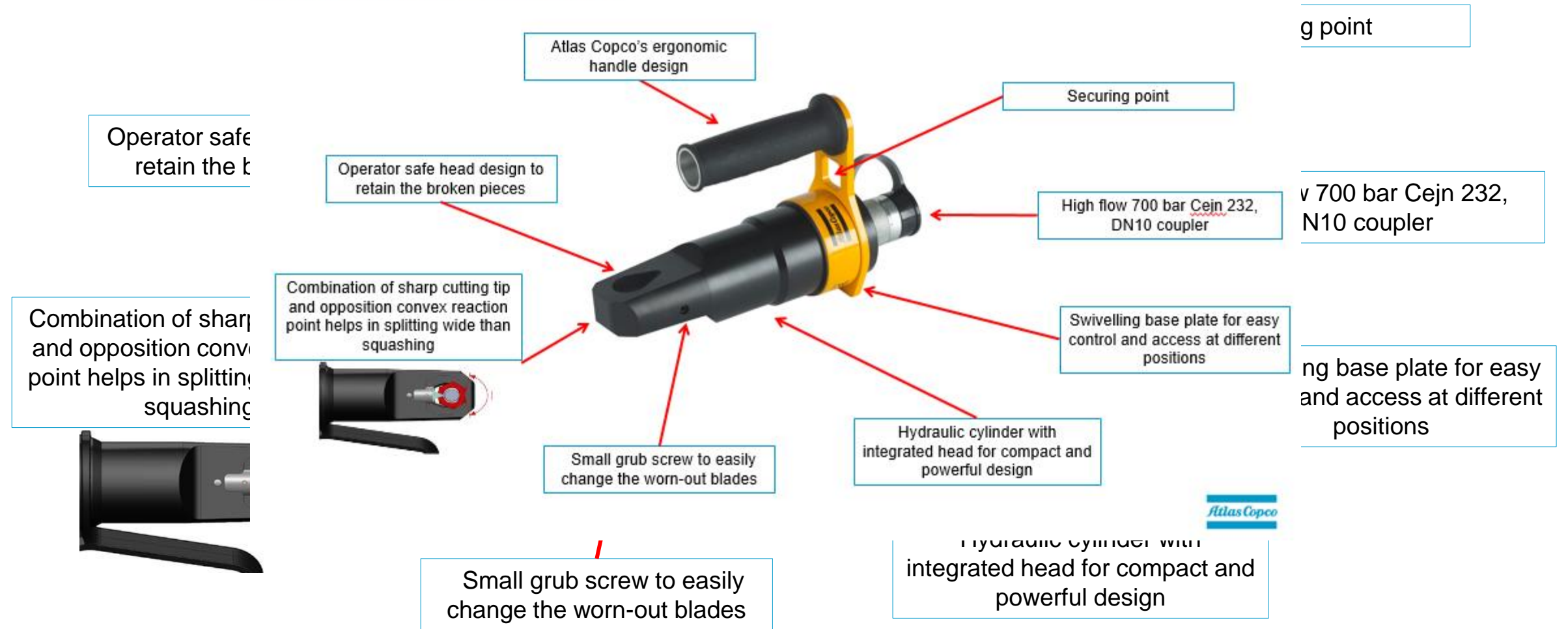


CONTENTS

- Product features
- Atlas Copco offer
- Dimensions
- Part numbers & prices
- How where when
- Spares
- Competition

NUT SPLITTER - FEATURES

Atlas Copco's ergonomic NUT SPLITTER - FEATURES



NUT SPLITTER PACKAGE

- Type – External hydraulic
- 4 models (12T, 15T, 20T, 36T) as of July 2017.
- 50 T model to be available by Sept 2017.
- Can be used on 10.9, 8.8, 2H grade nuts
- Fitted with couplers and unique Atlas Copco handle
- One easy to change cutting wedge (Standard)
- Allen key / support handle / coupler cap (Included)



DEMO JOINT

Demo joint which can also be used for tightening demos of RTX / RT or RTA can be ordered combined with first set of extra bolts and nuts suitable for ACNS12 and ACNS15 demos.

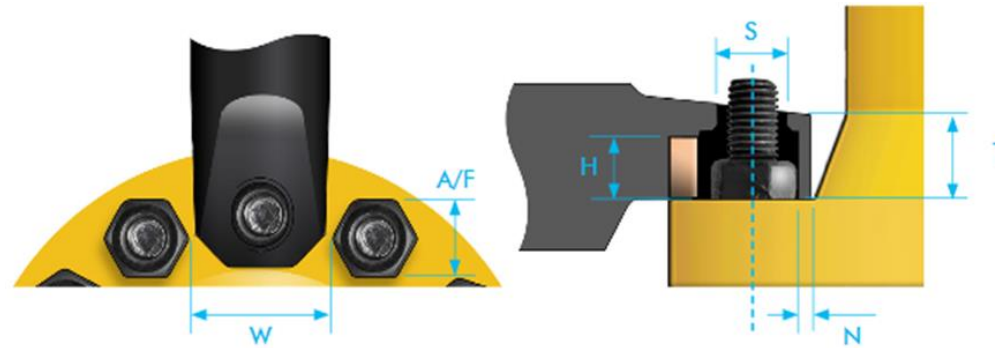
PTD part No - 8434228318



DIMENSIONS

Nut Splitter	Hex Nut A/F	Metric (Coarse)	Unc (Standard)	Unc (Heavy)
ACNS12	17.5 mm - 30.0 mm (0.69" - 1.18")	M12 - M20	9/16" - 5/8"	1/2" - 5/8"
ACNS15	23.0 mm - 36.5 mm (0.91" - 1.44")	M16 - M24	5/8" - 7/8"	9/16" - 7/8"
ACNS20	32.0 mm - 51.0 mm (1.26" - 2.01")	M24 - M33	1" - 1 1/4"	7/8" - 1 1/4"
ACNS36	50.8 mm - 65.0 mm (2.00" - 2.56")	M33 - M42	1 3/8" - 1 5/8"	1 1/4" - 1 5/8"

SPATIAL ENVELOPE



	DIMENSION	MEASURED FROM	MEASURED TO	MINIMUM	MAXIMUM
A/F	Across Flats	Nut Hex Flat	Nut Hex Flat	50.8mm (2.00")	65.0mm (2.6")
W	Clear Width	Side Obstruction	Side obstruction	107.6mm (4.2")	-
S	Protruding Stud Diameter	Stud O/D	Stud OD	-	49.2mm (1.94")
H	Cutting Height	Flange Face	Top of Nut	-	45.5mm (1.8")
N	Nose Clearance	Nut Flat	Frontal Obstruction	10.5mm (0.4")	-
T	Nose Height	Flange Face	Top of Nose	56mm (2.20")	

PART NUMBERS & PRICES



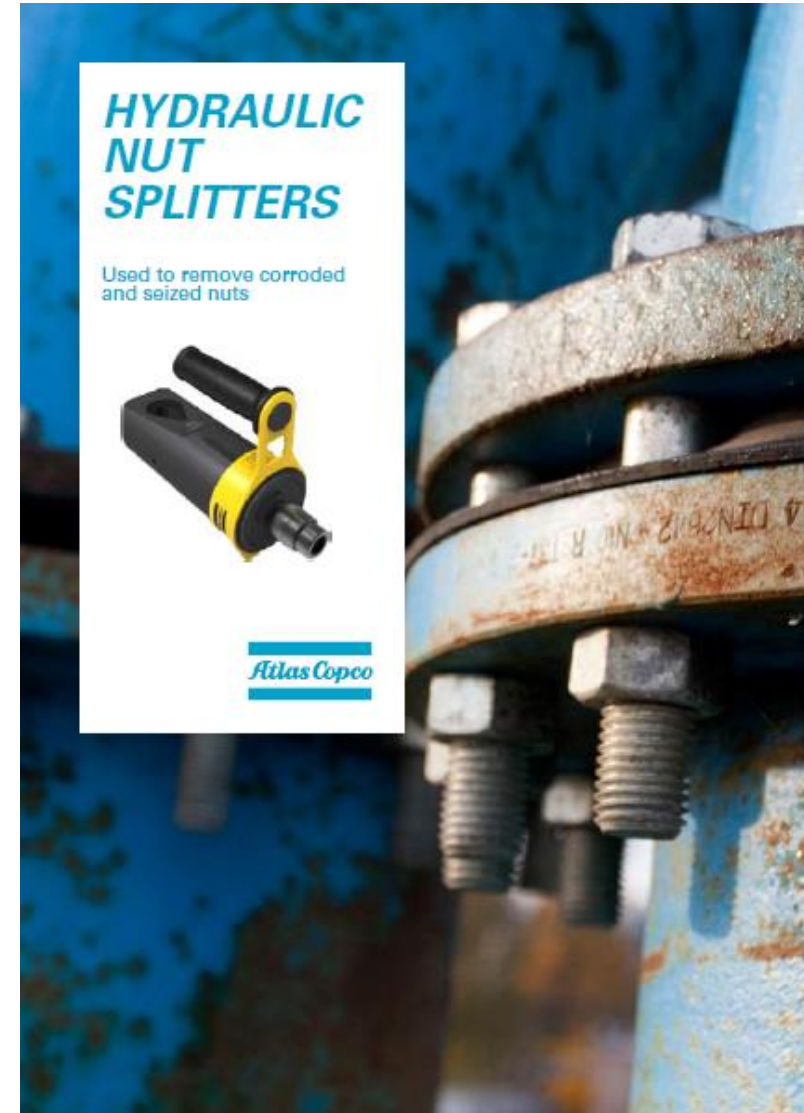
Ordering No.	Product	Description	ARP(Euro)
8434205800	Nut Splitter	ACNS12, 12 Ton	2000
8434205801	Nut Splitter	ACNS15, 15 Ton	2500
8434205802	Nut Splitter	ACNS20, 20 Ton	3500
8434205803	Nut Splitter	ACNS36, 36 Ton	7000
8434205804	Hydraulic Pump	ACMP700 Manual	850
8434205807	Hose kit	Single line 700 bar 4mtr	160

All splitters come with a carry case, lanyard and an extra cutting bit.

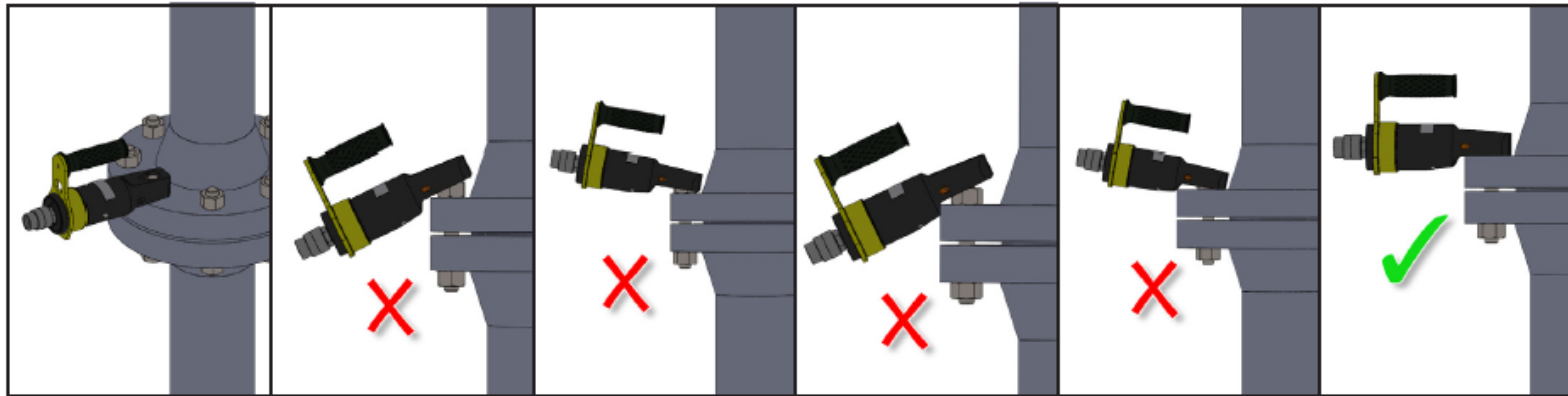
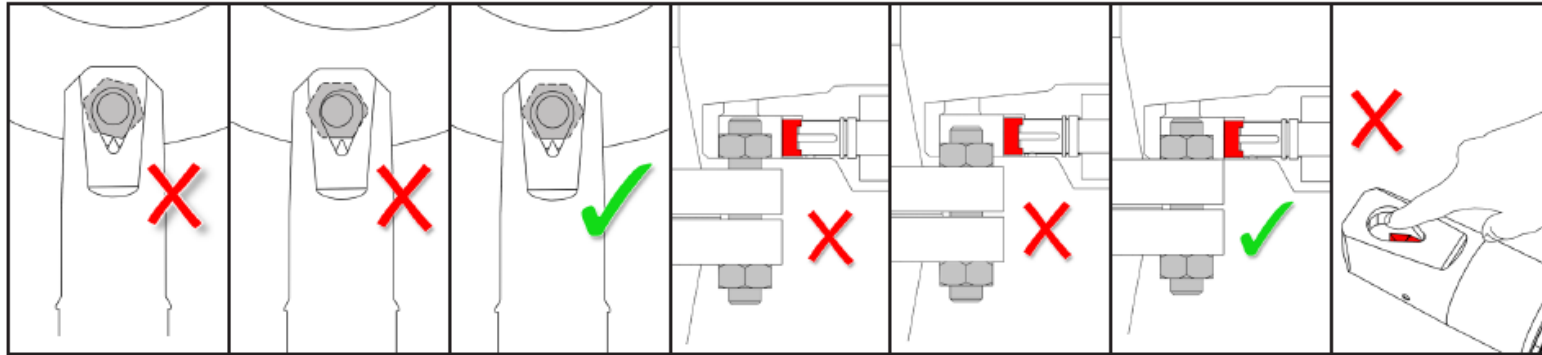
8434205811 Nut Splitter ACNS50, 50 Ton can also be ordered. To be available in PTD by August end.

WHERE & WHEN TO USE

- Nut splitters can be used anywhere where you find corroded nuts difficult to turn out with conventional torque tools.
- Most of the time the bolt is also corroded or seized inside the joint and threads damaged for smooth removal of nuts over the corroded bolts.
- As a first step, such joints are first loosened with an impact wrench moving it forward and reverse to have it moved at least half a rotation if possible.
- Once the nut is loose, bring the flat in front of the cutting tip and pump oil to move cutter forward slowly, breaking the nut flared outwards.
- Rotate nut by 180 degree and perform second cut to break open the joint.



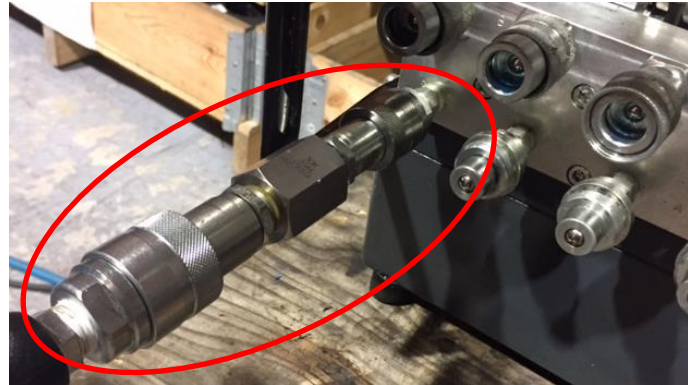
HOW TO USE ?



Place the tool on the nut with the flat surface of the cutting head flat against one of the nut flats and the Cutting Tip centered. Ensure the bottom face of the cutting head sits flat on the same surface that the nut is seated.

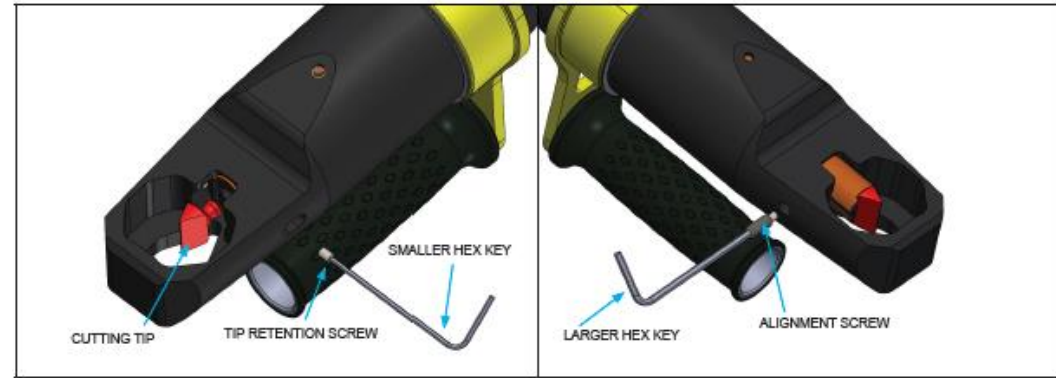
HOW TO USE ?

- Nut splitters up to 20T are easy to operate with manual pump ACMP700.
- Sizes from 36T onwards should be operated with 700 bar pneumatic or electric pumps by connecting splitter on A (Advance) port of the pump.
- Place the splitter on seized bolt in horizontal position with cutter pointing towards the middle of the nut's flat.
- Start the pump and keep it on until nut breaks. Release it immediately to avoid any damage on edge.
- Should only be used with 700 bar pumps.



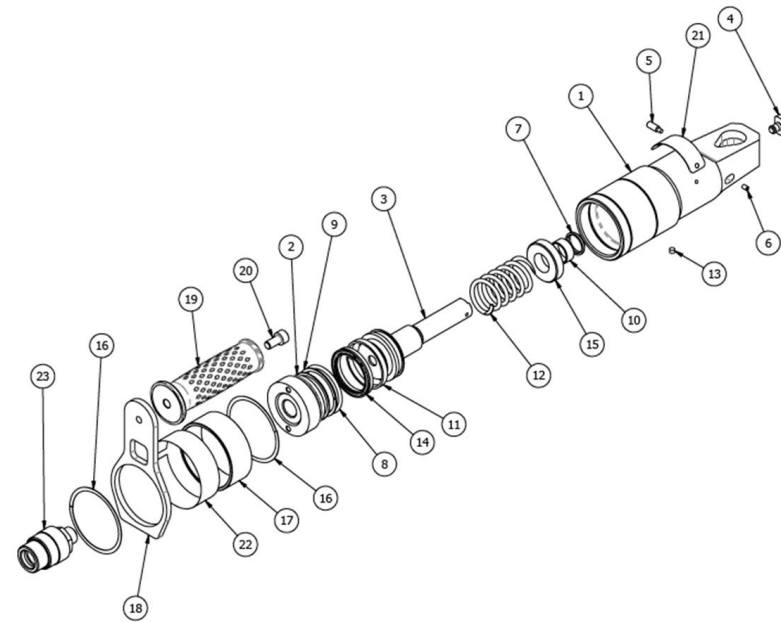
SPARES

Spares of all splitters have PTD part numbers and updated in system



ACNS15 Parts List

Ordering No	Item No	Description	Qty
	1	CUTTING HEAD	1
4222280031	2	CYLINDER END CAP	1
4222280032	3	PISTON	1
4222280037	4	NS15 CUTTING TIP	1
	5	ALIGNMENT SCREW	1
	6	M4 x 6mm GRUB SCREW	1
4222280034	7	WIPER SEAL	1
	8	O-RING	1
	9	BACK-UP RING	1
	10	WMU PLAIN BUSHING	1
	11	BEARING STRIP	1
	12	COMPRESSION COIL SPRING	1
	13	CYL VENT PLUG	1
	14	PISTON LIP SEAL	1
	15	SPRING SHIM	1
4222280035	16	SPIRAL RETAINING RING	2
	17	HANDLE SPACER	1
	18	HANDLE PLATE	1
4175070590	19	HANDLE	1
	20	M8 x 16 SHCS	1
	21	ATLAS COPCO NAME PLATE	1
4222280036	22	STICKER	1
8434205808	23	COUPLING 3/8" NPT MALE	1



COMPETITION

- Fastorq
- SPX
- Equalizer
- Enerpac
- Hydratight

Most of the competitors use three edge cutter but compromise on size of the head envelope. Our design provides compact head with sharp convex shape cutter to give better fit on wide range of sizes. Cutting blades are consumables and should be ordered extra with splitters.

***COMMITTED TO
SUSTAINABLE PRODUCTIVITY.***



Atlas Copco

